



Tanks Catalog



Tanks



Algor
eno-tecnologie inox



VARIABLE CAPACITY ROUND BOTTOM TANKS

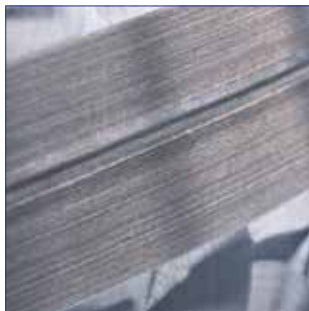
Variable capacity tanks with round bottom, welded legs, wine taster, inox level, floating lid kit, and rectangular or oval side manway door.

CODE FCPP	LITERS	BOTTOM	∅	H WALL	H LEGS	H TOTAL	DOOR	ADJUSTABLE LEGS	WINCH	OUTLETS
FCPP1500	1500	ROUND	1150	1500	500	2000	420X320 (S) - 420X530 (O) - OVAL (O)	OPTIONAL	OPTIONAL	DIN50F (S) - FL 100X100 (O) - Triclamp (O)
FCPP2000	2000	ROUND	1150	2000	500	2500	420X320 (S) - 420X530 (O) - OVAL (O)	OPTIONAL	OPTIONAL	DIN50F (S) - FL 100X100 (O) - Triclamp (O)
FCPP2000B	2000	ROUND	1320	1500	500	2000	420X320 (S) - 420X530 (O) - OVAL (O)	OPTIONAL	OPTIONAL	DIN50F (S) - FL 100X100 (O) - Triclamp (O)
FCPP2500	2500	ROUND	1320	2000	500	2500	420X320 (S) - 420X530 (O) - OVAL (O)	OPTIONAL	OPTIONAL	DIN50F (S) - FL 100X100 (O) - Triclamp (O)
FCPP3000	3000	ROUND	1320	2250	500	2750	420X320 (S) - 420X530 (O) - OVAL (O)	OPTIONAL	OPTIONAL	DIN50F (S) - FL 100X100 (O) - Triclamp (O)
FCPP3000B	3000	ROUND	1600	1500	500	2000	420X530 (S) - 420X320 (O) - OVAL (O)	OPTIONAL	OPTIONAL	DIN50F (S) - FL 100X100 (O) - Triclamp (O)
FCPP4000	4000	ROUND	1600	2000	500	2500	420X530 (S) - 420X320 (O) - OVAL (O)	OPTIONAL	OPTIONAL	DIN50F (S) - FL 100X100 (O) - Triclamp (O)
FCPP5000	5000	ROUND	1600	2500	500	3000	420X530 (S) - 420X320 (O) - OVAL (O)	OPTIONAL	OPTIONAL	DIN50F (S) - FL 100X100 (O) - Triclamp (O)
FCPP5000B	5000	ROUND	1750	2250	500	2750	420X530 (S) - 420X320 (O) - OVAL (O)	OPTIONAL	OPTIONAL	DIN50F (S) - FL 100X100 (O) - Triclamp (O)
FCPP6000	6000	ROUND	1600	3000	500	3500	420X530 (S) - 420X320 (O) - OVAL (O)	OPTIONAL	OPTIONAL	DIN50F (S) - FL 100X100 (O) - Triclamp (O)
FCPP6000B	6000	ROUND	1750	2500	500	3000	420X530 (S) - 420X320 (O) - OVAL (O)	OPTIONAL	OPTIONAL	DIN50F (S) - FL 100X100 (O) - Triclamp (O)
FCPP7500	7500	ROUND	1750	3250	500	3750	420X530 (S) - 420X320 (O) - OVAL (O)	OPTIONAL	OPTIONAL	DIN50F (S) - FL 100X100 (O) - Triclamp (O)
FCPP7500B	7500	ROUND	1900	2650	500	3150	420X530 (S) - 420X320 (O) - OVAL (O)	OPTIONAL	OPTIONAL	DIN50F (S) - FL 100X100 (O) - Triclamp (O)
FCPP10000	10000	ROUND	1900	3750	500	4250	420X530 (S) - 420X320 (O) - OVAL (O)	OPTIONAL	OPTIONAL	DIN50F (S) - FL 100X100 (O) - Triclamp (O)
FCPP10000B	10000	ROUND	2100	3000	500	3500	420X530 (S) - 420X320 (O) - OVAL (O)	OPTIONAL	OPTIONAL	DIN50F (S) - FL 100X100 (O) - Triclamp (O)
FCPP12000	12000	ROUND	2100	3500	500	4000	420X530 (S) - 420X320 (O) - OVAL (O)	OPTIONAL	OPTIONAL	DIN50F (S) - FL 100X100 (O) - Triclamp (O)
FCPP14000	14000	ROUND	2100	4000	500	4500	420X530 (S) - 420X320 (O) - OVAL (O)	OPTIONAL	OPTIONAL	DIN50F (S) - FL 100X100 (O) - Triclamp (O)
FCPP16000	16000	ROUND	2100	4500	500	5000	420X530 (S) - 420X320 (O) - OVAL (O)	OPTIONAL	OPTIONAL	DIN50F (S) - FL 100X100 (O) - Triclamp (O)

Simbology: (S) Standard - (O) Optional



Algor
eno-tecnologie inox



VARIABLE CAPACITY ROUND BOTTOM TANKS WITH SINGLE COOLING JACKET

Variable capacity tanks with round bottom, welded legs, wine taster, inox level, floating lid kit, rectangular or oval side manway door, and single cooling jacket.

CODE FCPT	LITERS	BOTTOM	∅	H WALL	H LEGS	H TOTAL	DOOR	ADJUSTABLE LEGS	WINCH	OUTLETS	COOLING JACKET
FCPT2000B	2000	ROUND	1320	1500	500	2000	420X320 (S) - 420X530 (O) - OVAL (O)	OPTIONAL	OPTIONAL	DIN50F (S) - FL 100X100 (O) - Triclamp (O)	H 500
FCPT2500	2500	ROUND	1320	2000	500	2500	420X320 (S) - 420X530 (O) - OVAL (O)	OPTIONAL	OPTIONAL	DIN50F (S) - FL 100X100 (O) - Triclamp (O)	H 500
FCPT3000	3000	ROUND	1320	2250	500	2750	420X320 (S) - 420X530 (O) - OVAL (O)	OPTIONAL	OPTIONAL	DIN50F (S) - FL 100X100 (O) - Triclamp (O)	H 500
FCPT3000B	3000	ROUND	1600	1500	500	2000	420X530 (S) - 420X320 (O) - OVAL (O)	OPTIONAL	OPTIONAL	DIN50F (S) - FL 100X100 (O) - Triclamp (O)	H 500
FCPT4000	4000	ROUND	1600	2000	500	2500	420X530 (S) - 420X320 (O) - OVAL (O)	OPTIONAL	OPTIONAL	DIN50F (S) - FL 100X100 (O) - Triclamp (O)	H 500
FCPT5000	5000	ROUND	1600	2500	500	3000	420X530 (S) - 420X320 (O) - OVAL (O)	OPTIONAL	OPTIONAL	DIN50F (S) - FL 100X100 (O) - Triclamp (O)	H 500
FCPT5000B	5000	ROUND	1750	2250	500	2750	420X530 (S) - 420X320 (O) - OVAL (O)	OPTIONAL	OPTIONAL	DIN50F (S) - FL 100X100 (O) - Triclamp (O)	H 500
FCPT6000	6000	ROUND	1600	3000	500	3500	420X530 (S) - 420X320 (O) - OVAL (O)	OPTIONAL	OPTIONAL	DIN50F (S) - FL 100X100 (O) - Triclamp (O)	H 500
FCPT6000B	6000	ROUND	1750	2500	500	3000	420X530 (S) - 420X320 (O) - OVAL (O)	OPTIONAL	OPTIONAL	DIN50F (S) - FL 100X100 (O) - Triclamp (O)	H 500
FCPT7500	7500	ROUND	1750	3250	500	3750	420X530 (S) - 420X320 (O) - OVAL (O)	OPTIONAL	OPTIONAL	DIN50F (S) - FL 100X100 (O) - Triclamp (O)	H 750
FCPT7500B	7500	ROUND	1900	2650	500	3150	420X530 (S) - 420X320 (O) - OVAL (O)	OPTIONAL	OPTIONAL	DIN50F (S) - FL 100X100 (O) - Triclamp (O)	H 750
FCPT10000	10000	ROUND	1900	3750	500	4250	420X530 (S) - 420X320 (O) - OVAL (O)	OPTIONAL	OPTIONAL	DIN50F (S) - FL 100X100 (O) - Triclamp (O)	H 750
FCPT10000B	10000	ROUND	2100	3000	500	3500	420X530 (S) - 420X320 (O) - OVAL (O)	OPTIONAL	OPTIONAL	DIN50F (S) - FL 100X100 (O) - Triclamp (O)	H 750
FCPT12000	12000	ROUND	2100	3500	500	4000	420X530 (S) - 420X320 (O) - OVAL (O)	OPTIONAL	OPTIONAL	DIN50F (S) - FL 100X100 (O) - Triclamp (O)	H 750
FCPT14000	14000	ROUND	2100	4000	500	4500	420X530 (S) - 420X320 (O) - OVAL (O)	OPTIONAL	OPTIONAL	DIN50F (S) - FL 100X100 (O) - Triclamp (O)	H 750 + H 750
FCPT16000	16000	ROUND	2100	4500	500	5000	420X530 (S) - 420X320 (O) - OVAL (O)	OPTIONAL	OPTIONAL	DIN50F (S) - FL 100X100 (O) - Triclamp (O)	H 750 + H 750

Simbology: (S) Standard - (O) Optional



Algor
eno-tecnologie inox



VARIABLE CAPACITY ROUND BOTTOM TANKS WITH SHAPED COOLING JACKET

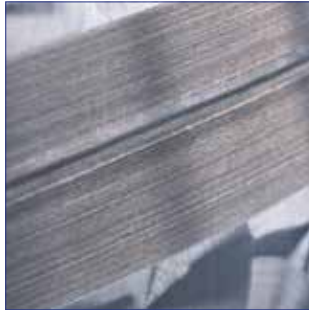
Variable capacity tanks with round bottom, welded legs, wine taster, inox level, floating lid kit, rectangular or oval side manway door, and shaped cooling jacket .

CODE FCPTF	LITERS	BOTTOM	∅	H WALL	H LEGS	H TOTAL	DOOR	ADJUSTABLE LEGS	WINCH	OUTLETS	COOLING JACKET
FCPTF2000B	2000	ROUND	1320	1500	500	2000	420X320 (S) - 420X530 (O) - OVAL (O)	OPTIONAL	OPTIONAL	DIN50F (S) - FL 100X100 (O) - Triclamp (O)	H 1000 SHAPED
FCPTF2500	2500	ROUND	1320	2000	500	2500	420X320 (S) - 420X530 (O) - OVAL (O)	OPTIONAL	OPTIONAL	DIN50F (S) - FL 100X100 (O) - Triclamp (O)	H 1000 SHAPED
FCPTF3000	3000	ROUND	1320	2250	500	2750	420X320 (S) - 420X530 (O) - OVAL (O)	OPTIONAL	OPTIONAL	DIN50F (S) - FL 100X100 (O) - Triclamp (O)	H 1000 SHAPED
FCPTF3000B	3000	ROUND	1600	1500	500	2000	420X530 (S) - 420X320 (O) - OVAL (O)	OPTIONAL	OPTIONAL	DIN50F (S) - FL 100X100 (O) - Triclamp (O)	H 1000 SHAPED
FCPTF4000	4000	ROUND	1600	2000	500	2500	420X530 (S) - 420X320 (O) - OVAL (O)	OPTIONAL	OPTIONAL	DIN50F (S) - FL 100X100 (O) - Triclamp (O)	H 1000 SHAPED
FCPTF5000	5000	ROUND	1600	2500	500	3000	420X530 (S) - 420X320 (O) - OVAL (O)	OPTIONAL	OPTIONAL	DIN50F (S) - FL 100X100 (O) - Triclamp (O)	H 1000 SHAPED
FCPTF5000B	5000	ROUND	1750	2250	500	2750	420X530 (S) - 420X320 (O) - OVAL (O)	OPTIONAL	OPTIONAL	DIN50F (S) - FL 100X100 (O) - Triclamp (O)	H 1000 SHAPED
FCPTF6000	6000	ROUND	1600	3000	500	3500	420X530 (S) - 420X320 (O) - OVAL (O)	OPTIONAL	OPTIONAL	DIN50F (S) - FL 100X100 (O) - Triclamp (O)	H 1000 SHAPED
FCPTF6000B	6000	ROUND	1750	2500	500	3000	420X530 (S) - 420X320 (O) - OVAL (O)	OPTIONAL	OPTIONAL	DIN50F (S) - FL 100X100 (O) - Triclamp (O)	H 1000 SHAPED
FCPTF7500	7500	ROUND	1750	3250	500	3750	420X530 (S) - 420X320 (O) - OVAL (O)	OPTIONAL	OPTIONAL	DIN50F (S) - FL 100X100 (O) - Triclamp (O)	H 1000 SHAPED
FCPTF7500B	7500	ROUND	1900	2650	500	3150	420X530 (S) - 420X320 (O) - OVAL (O)	OPTIONAL	OPTIONAL	DIN50F (S) - FL 100X100 (O) - Triclamp (O)	H 1000 SHAPED
FCPTF10000	10000	ROUND	1900	3750	500	4250	420X530 (S) - 420X320 (O) - OVAL (O)	OPTIONAL	OPTIONAL	DIN50F (S) - FL 100X100 (O) - Triclamp (O)	H 1000 SHAPED
FCPTF10000B	10000	ROUND	2100	3000	500	3500	420X530 (S) - 420X320 (O) - OVAL (O)	OPTIONAL	OPTIONAL	DIN50F (S) - FL 100X100 (O) - Triclamp (O)	H 1000 SHAPED
FCPTF12000	12000	ROUND	2100	3500	500	4000	420X530 (S) - 420X320 (O) - OVAL (O)	OPTIONAL	OPTIONAL	DIN50F (S) - FL 100X100 (O) - Triclamp (O)	H 1000 SHAPED
FCPTF14000	14000	ROUND	2100	4000	500	4500	420X530 (S) - 420X320 (O) - OVAL (O)	OPTIONAL	OPTIONAL	DIN50F (S) - FL 100X100 (O) - Triclamp (O)	H 1000 +750
FCPTF16000	16000	ROUND	2100	4500	500	5000	420X530 (S) - 420X320 (O) - OVAL (O)	OPTIONAL	OPTIONAL	DIN50F (S) - FL 100X100 (O) - Triclamp (O)	H 1000.+750

Simbology: (S) Standard - (O) Optional



Algor
eno-tecnologie inox



VARIABLE CAPACITY TANKS WITH 5% SLOPED BOTTOM

Variable capacity tanks with 5% sloped bottom, welded legs wine taster, inox level, floating lid kit, and rectangular or oval side manway door.

CODE FCPPI	LITERS	BOTTOM	∅	H WALL	H LEGS	H TOTAL	DOOR	ADJUSTABLE LEGS	WINCH	OUTLETS
FCPPI2000B	2000	SLOPED 5%	1320	1500	500	2000	420X320 (S) - 420X530 (O) - OVAL (O)	OPTIONAL	OPTIONAL	DIN50F (S) - FL 100X100 (O) - Triclamp (O)
FCPPI2500	2500	SLOPED 5%	1320	2000	500	2500	420X320 (S) - 420X530 (O) - OVAL (O)	OPTIONAL	OPTIONAL	DIN50F (S) - FL 100X100 (O) - Triclamp (O)
FCPPI3000	3000	SLOPED 5%	1320	2250	500	2750	420X320 (S) - 420X530 (O) - OVAL (O)	OPTIONAL	OPTIONAL	DIN50F (S) - FL 100X100 (O) - Triclamp (O)
FCPPI3000B	3000	SLOPED 5%	1600	1500	500	2000	420X530 (S) - 420X320 (O) - OVAL (O)	OPTIONAL	OPTIONAL	DIN50F (S) - FL 100X100 (O) - Triclamp (O)
FCPPI4000	4000	SLOPED 5%	1600	2000	500	2500	420X530 (S) - 420X320 (O) - OVAL (O)	OPTIONAL	OPTIONAL	DIN50F (S) - FL 100X100 (O) - Triclamp (O)
FCPPI5000	5000	SLOPED 5%	1600	2500	500	3000	420X530 (S) - 420X320 (O) - OVAL (O)	OPTIONAL	OPTIONAL	DIN50F (S) - FL 100X100 (O) - Triclamp (O)
FCPPI5000B	5000	SLOPED 5%	1750	2250	500	2750	420X530 (S) - 420X320 (O) - OVAL (O)	OPTIONAL	OPTIONAL	DIN50F (S) - FL 100X100 (O) - Triclamp (O)
FCPPI6000	6000	SLOPED 5%	1600	3000	500	3500	420X530 (S) - 420X320 (O) - OVAL (O)	OPTIONAL	OPTIONAL	DIN50F (S) - FL 100X100 (O) - Triclamp (O)
FCPPI6000B	6000	SLOPED 5%	1750	2500	500	3000	420X530 (S) - 420X320 (O) - OVAL (O)	OPTIONAL	OPTIONAL	DIN50F (S) - FL 100X100 (O) - Triclamp (O)
FCPPI7500	7500	SLOPED 5%	1750	3250	500	3750	420X530 (S) - 420X320 (O) - OVAL (O)	OPTIONAL	OPTIONAL	DIN50F (S) - FL 100X100 (O) - Triclamp (O)
FCPPI7500B	7500	SLOPED 5%	1900	2650	500	3150	420X530 (S) - 420X320 (O) - OVAL (O)	OPTIONAL	OPTIONAL	DIN50F (S) - FL 100X100 (O) - Triclamp (O)
FCPPI10000	10000	SLOPED 5%	1900	3750	500	4250	420X530 (S) - 420X320 (O) - OVAL (O)	OPTIONAL	OPTIONAL	DIN50F (S) - FL 100X100 (O) - Triclamp (O)
FCPPI10000B	10000	SLOPED 5%	2100	3000	500	3500	420X530 (S) - 420X320 (O) - OVAL (O)	OPTIONAL	OPTIONAL	DIN50F (S) - FL 100X100 (O) - Triclamp (O)
FCPPI12000	12000	SLOPED 5%	2100	3500	500	4000	420X530 (S) - 420X320 (O) - OVAL (O)	OPTIONAL	OPTIONAL	DIN50F (S) - FL 100X100 (O) - Triclamp (O)
FCPPI14000	14000	SLOPED 5%	2100	4000	500	4500	420X530 (S) - 420X320 (O) - OVAL (O)	OPTIONAL	OPTIONAL	DIN50F (S) - FL 100X100 (O) - Triclamp (O)
FCPPI16000	16000	SLOPED 5%	2100	4500	500	5000	420X530 (S) - 420X320 (O) - OVAL (O)	OPTIONAL	OPTIONAL	DIN50F (S) - FL 100X100 (O) - Triclamp (O)

Simbology: (S) Standard - (O) Optional



Algor
eno-tecnologie inox



VARIABLE CAPACITY 5% SLOPED BOTTOM TANKS WITH SINGLE COOLING JACKET

Variable capacity tanks with 5% sloped bottom, welded legs wine taster, inox level, floating lid kit, rectangular or oval side manway door and single cooling jacket.

CODE FCPTI	LITERS	BOTTOM	Ø	H WALL	H LEGS	H TOTAL	DOOR	ADJUSTABLE LEGS	WINCH	OUTLETS	COOLING JACKET
FCPTI2000B	2000	SLOPED 5%	1320	1500	500	2000	420X320 (S) - 420X530 (O) - OVAL (O)	OPTIONAL	OPTIONAL	DIN50F (S) - FL 100X100 (O) - Triclamp (O)	H 500
FCPTI2500	2500	SLOPED 5%	1320	2000	500	2500	420X320 (S) - 420X530 (O) - OVAL (O)	OPTIONAL	OPTIONAL	DIN50F (S) - FL 100X100 (O) - Triclamp (O)	H 500
FCPTI3000	3000	SLOPED 5%	1320	2250	500	2750	420X320 (S) - 420X530 (O) - OVAL (O)	OPTIONAL	OPTIONAL	DIN50F (S) - FL 100X100 (O) - Triclamp (O)	H 500
FCPTI3000B	3000	SLOPED 5%	1600	1500	500	2000	420X530 (S) - 420X320 (O) - OVAL (O)	OPTIONAL	OPTIONAL	DIN50F (S) - FL 100X100 (O) - Triclamp (O)	H 500
FCPTI4000	4000	SLOPED 5%	1600	2000	500	2500	420X530 (S) - 420X320 (O) - OVAL (O)	OPTIONAL	OPTIONAL	DIN50F (S) - FL 100X100 (O) - Triclamp (O)	H 500
FCPTI5000	5000	SLOPED 5%	1600	2500	500	3000	420X530 (S) - 420X320 (O) - OVAL (O)	OPTIONAL	OPTIONAL	DIN50F (S) - FL 100X100 (O) - Triclamp (O)	H 500
FCPTI5000B	5000	SLOPED 5%	1750	2250	500	2750	420X530 (S) - 420X320 (O) - OVAL (O)	OPTIONAL	OPTIONAL	DIN50F (S) - FL 100X100 (O) - Triclamp (O)	H 500
FCPTI6000	6000	SLOPED 5%	1600	3000	500	3500	420X530 (S) - 420X320 (O) - OVAL (O)	OPTIONAL	OPTIONAL	DIN50F (S) - FL 100X100 (O) - Triclamp (O)	H 500
FCPTI6000B	6000	SLOPED 5%	1750	2500	500	3000	420X530 (S) - 420X320 (O) - OVAL (O)	OPTIONAL	OPTIONAL	DIN50F (S) - FL 100X100 (O) - Triclamp (O)	H 500
FCPTI7500	7500	SLOPED 5%	1750	3250	500	3750	420X530 (S) - 420X320 (O) - OVAL (O)	OPTIONAL	OPTIONAL	DIN50F (S) - FL 100X100 (O) - Triclamp (O)	H 750
FCPTI7500B	7500	SLOPED 5%	1900	2650	500	3150	420X530 (S) - 420X320 (O) - OVAL (O)	OPTIONAL	OPTIONAL	DIN50F (S) - FL 100X100 (O) - Triclamp (O)	H 750
FCPTI10000	10000	SLOPED 5%	1900	3750	500	4250	420X530 (S) - 420X320 (O) - OVAL (O)	OPTIONAL	OPTIONAL	DIN50F (S) - FL 100X100 (O) - Triclamp (O)	H 750
FCPTI10000B	10000	SLOPED 5%	2100	3000	500	3500	420X530 (S) - 420X320 (O) - OVAL (O)	OPTIONAL	OPTIONAL	DIN50F (S) - FL 100X100 (O) - Triclamp (O)	H 750
FCPTI12000	12000	SLOPED 5%	2100	3500	500	4000	420X530 (S) - 420X320 (O) - OVAL (O)	OPTIONAL	OPTIONAL	DIN50F (S) - FL 100X100 (O) - Triclamp (O)	H 750
FCPTI14000	14000	SLOPED 5%	2100	4000	500	4500	420X530 (S) - 420X320 (O) - OVAL (O)	OPTIONAL	OPTIONAL	DIN50F (S) - FL 100X100 (O) - Triclamp (O)	H 750 + H 750
FCPTI16000	16000	SLOPED 5%	2100	4500	500	5000	420X530 (S) - 420X320 (O) - OVAL (O)	OPTIONAL	OPTIONAL	DIN50F (S) - FL 100X100 (O) - Triclamp (O)	H 750 + H 750

Simbology: (S) Standard - (O) Optional



Algor
eno-tecnologie inox



VARIABLE CAPACITY 5% SLOPED BOTTOM TANKS WITH SHAPED COOLING JACKET

Variable capacity tanks with 5% sloped bottom, welded legs wine taster, inox level, floating lid kit, rectangular or oval side manway door and shaped cooling jacket.

CODE FCPTFI	LITERS	BOTTOM	∅	H WALL	H LEGS	H TOTAL	DOOR	ADJUSTABLE LEGS	WINCH	OUTLETS	COOLING JACKET
FCPTFI2000B	2000	SLOPED 5%	1320	1500	500	2000	420X320 (S) - 420X530 (O) - OVAL (O)	OPTIONAL	OPTIONAL	DIN50F (S) - FL 100X100 (O) - Triclamp (O)	H 1000 SHAPED
FCPTFI2500	2500	SLOPED 5%	1320	2000	500	2500	420X320 (S) - 420X530 (O) - OVAL (O)	OPTIONAL	OPTIONAL	DIN50F (S) - FL 100X100 (O) - Triclamp (O)	H 1000 SHAPED
FCPTFI3000	3000	SLOPED 5%	1320	2250	500	2750	420X320 (S) - 420X530 (O) - OVAL (O)	OPTIONAL	OPTIONAL	DIN50F (S) - FL 100X100 (O) - Triclamp (O)	H 1000 SHAPED
FCPTFI3000B	3000	SLOPED 5%	1600	1500	500	2000	420X530 (S) - 420X320 (O) - OVAL (O)	OPTIONAL	OPTIONAL	DIN50F (S) - FL 100X100 (O) - Triclamp (O)	H 1000 SHAPED
FCPTFI4000	4000	SLOPED 5%	1600	2000	500	2500	420X530 (S) - 420X320 (O) - OVAL (O)	OPTIONAL	OPTIONAL	DIN50F (S) - FL 100X100 (O) - Triclamp (O)	H 1000 SHAPED
FCPTFI5000	5000	SLOPED 5%	1600	2500	500	3000	420X530 (S) - 420X320 (O) - OVAL (O)	OPTIONAL	OPTIONAL	DIN50F (S) - FL 100X100 (O) - Triclamp (O)	H 1000 SHAPED
FCPTFI5000B	5000	SLOPED 5%	1750	2250	500	2750	420X530 (S) - 420X320 (O) - OVAL (O)	OPTIONAL	OPTIONAL	DIN50F (S) - FL 100X100 (O) - Triclamp (O)	H 1000 SHAPED
FCPTFI6000	6000	SLOPED 5%	1600	3000	500	3500	420X530 (S) - 420X320 (O) - OVAL (O)	OPTIONAL	OPTIONAL	DIN50F (S) - FL 100X100 (O) - Triclamp (O)	H 1000 SHAPED
FCPTFI6000B	6000	SLOPED 5%	1750	2500	500	3000	420X530 (S) - 420X320 (O) - OVAL (O)	OPTIONAL	OPTIONAL	DIN50F (S) - FL 100X100 (O) - Triclamp (O)	H 1000 SHAPED
FCPTFI7500	7500	SLOPED 5%	1750	3250	500	3750	420X530 (S) - 420X320 (O) - OVAL (O)	OPTIONAL	OPTIONAL	DIN50F (S) - FL 100X100 (O) - Triclamp (O)	H 1000 SHAPED
FCPTFI7500B	7500	SLOPED 5%	1900	2650	500	3150	420X530 (S) - 420X320 (O) - OVAL (O)	OPTIONAL	OPTIONAL	DIN50F (S) - FL 100X100 (O) - Triclamp (O)	H 1000 SHAPED
FCPTFI10000	10000	SLOPED 5%	1900	3750	500	4250	420X530 (S) - 420X320 (O) - OVAL (O)	OPTIONAL	OPTIONAL	DIN50F (S) - FL 100X100 (O) - Triclamp (O)	H 1000 SHAPED
FCPTFI10000B	10000	SLOPED 5%	2100	3000	500	3500	420X530 (S) - 420X320 (O) - OVAL (O)	OPTIONAL	OPTIONAL	DIN50F (S) - FL 100X100 (O) - Triclamp (O)	H 1000 SHAPED
FCPTFI12000	12000	SLOPED 5%	2100	3500	500	4000	420X530 (S) - 420X320 (O) - OVAL (O)	OPTIONAL	OPTIONAL	DIN50F (S) - FL 100X100 (O) - Triclamp (O)	H 1000 SHAPED
FCPTFI14000	14000	SLOPED 5%	2100	4000	500	4500	420X530 (S) - 420X320 (O) - OVAL (O)	OPTIONAL	OPTIONAL	DIN50F (S) - FL 100X100 (O) - Triclamp (O)	H 1000 +750
FCPTFI16000	16000	SLOPED 5%	2100	4500	500	5000	420X530 (S) - 420X320 (O) - OVAL (O)	OPTIONAL	OPTIONAL	DIN50F (S) - FL 100X100 (O) - Triclamp (O)	H 1000.+750

Simbology: (S) Standard - (O) Optional



Algor
eno-tecnologie inox



TANK STORAGE SYSTEM WITH ROUND BOTTOM

Tank storage system with round bottom, welded legs, wine taster, inox level, top manhole cover (diam 400) and rectangular or oval side manway door.

CODE FCPS	LITERS	BOTTOM	∅	H WALL	H LEGS	TOP MANHOLE COVER	H TOTAL	SIDE MANWAY DOOR	ADJUSTABLE LEGS	OUTLETS
FCPS1500	1500	ROUND	1150	1500	500	CENT. Ø 400 (S) - ○ OFF-CENTRED Ø 400 (O)	2300	420X320 (S) - 420X530 (O) - OVAL(O)	OPTIONAL	DIN50F (S) - FL 100X100 (O) - Triclamp (O)
FCPS2000	2000	ROUND	1150	2000	500	CENT. Ø 400 (S) - ○ OFF-CENTRED Ø 400 (O)	2800	420X320 (S) - 420X530 (O) - OVAL (O)	OPTIONAL	DIN50F (S) - FL 100X100 (O) - Triclamp (O)
FCPS2000B	2000	ROUND	1320	1500	500	CENT. Ø 400 (S) - ○ OFF-CENTRED Ø 400 (O)	2300	420X320 (S) - 420X530 (O) - OVAL (O)	OPTIONAL	DIN50F (S) - FL 100X100 (O) - Triclamp (O)
FCPS2500	2500	ROUND	1320	2000	500	CENT. Ø 400 (S) - ○ OFF-CENTRED Ø 400 (O)	2800	420X320 (S) - 420X530 (O) - OVAL (O)	OPTIONAL	DIN50F (S) - FL 100X100 (O) - Triclamp (O)
FCPS3000	3000	ROUND	1320	2250	500	CENT. Ø 400 (S) - ○ OFF-CENTRED Ø 400 (O)	3050	420X320 (S) - 420X530 (O) - OVAL (O)	OPTIONAL	DIN50F (S) - FL 100X100 (O) - Triclamp (O)
FCPS3000B	3000	ROUND	1600	1500	500	CENT. Ø 400 (S) - ○ OFF-CENTRED Ø 400 (O)	2300	420X530 (S) - 420X320 (O) - OVAL (O)	OPTIONAL	DIN50F (S) - FL 100X100 (O) - Triclamp (O)
FCPS4000	4000	ROUND	1600	2000	500	CENT. Ø 400 (S) - ○ OFF-CENTRED Ø 400 (O)	2800	420X530 (S) - 420X320 (O) - OVAL (O)	OPTIONAL	DIN50F (S) - FL 100X100 (O) - Triclamp (O)
FCPS5000	5000	ROUND	1600	2500	500	CENT. Ø 400 (S) - ○ OFF-CENTRED Ø 400 (O)	3300	420X530 (S) - 420X320 (O) - OVAL (O)	OPTIONAL	DIN50F (S) - FL 100X100 (O) - Triclamp (O)
FCPS5000B	5000	ROUND	1750	2000	500	CENT. Ø 400 (S) - ○ OFF-CENTRED Ø 400 (O)	2800	420X530 (S) - 420X320 (O) - OVAL (O)	OPTIONAL	DIN50F (S) - FL 100X100 (O) - Triclamp (O)
FCPS6000	6000	ROUND	1600	3000	500	CENT. Ø 400 (S) - ○ OFF-CENTRED Ø 400 (O)	3800	420X530 (S) - 420X320 (O) - OVAL (O)	OPTIONAL	DIN50F (S) - FL 100X100 (O) - Triclamp (O)
FCPS6000B	6000	ROUND	1750	2500	500	CENT. Ø 400 (S) - ○ OFF-CENTRED Ø 400 (O)	3300	420X530 (S) - 420X320 (O) - OVAL (O)	OPTIONAL	DIN50F (S) - FL 100X100 (O) - Triclamp (O)
FCPS7500	7500	ROUND	1750	3000	500	CENT. Ø 400 (S) - ○ OFF-CENTRED Ø 400 (O)	3800	420X530 (S) - 420X320 (O) - OVAL (O)	OPTIONAL	DIN50F (S) - FL 100X100 (O) - Triclamp (O)
FCPS7500B	7500	ROUND	1900	2500	500	CENT. Ø 400 (S) - ○ OFF-CENTRED Ø 400 (O)	3300	420X530 (S) - 420X320 (O) - OVAL (O)	OPTIONAL	DIN50F (S) - FL 100X100 (O) - Triclamp (O)
FCPS10000	10000	ROUND	1900	3500	500	CENT. Ø 400 (S) - ○ OFF-CENTRED Ø 400 (O)	4300	420X530 (S) - 420X320 (O) - OVAL (O)	OPTIONAL	DIN50F (S) - FL 100X100 (O) - Triclamp (O)
FCPS10000B	10000	ROUND	2100	3000	500	CENT. Ø 400 (S) - ○ OFF-CENTRED Ø 400 (O)	3800	420X530 (S) - 420X320 (O) - OVAL (O)	OPTIONAL	DIN50F (S) - FL 100X100 (O) - Triclamp (O)
FCPS12000	12000	ROUND	2100	3250	500	CENT. Ø 400 (S) - ○ OFF-CENTRED Ø 400 (O)	4050	420X530 (S) - 420X320 (O) - OVAL (O)	OPTIONAL	DIN50F (S) - FL 100X100 (O) - Triclamp (O)
FCPS14000	14000	ROUND	2100	4000	500	CENT. Ø 400 (S) - ○ OFF-CENTRED Ø 400 (O)	4800	420X530 (S) - 420X320 (O) - OVAL (O)	OPTIONAL	DIN50F (S) - FL 100X100 (O) - Triclamp (O)
FCPS16000	16000	ROUND	2100	4500	500	CENT. Ø 400 (S) - ○ OFF-CENTRED Ø 400 (O)	5300	420X530 (S) - 420X320 (O) - OVAL (O)	OPTIONAL	DIN50F (S) - FL 100X100 (O) - Triclamp (O)

Simbology: (S) Standard - (O) Optional



Algor
eno-technologie inox



TANK STORAGE SYSTEM WITH ROUND BOTTOM AND SINGLE COOLING JACKET

Tank storage system with round bottom, welded legs, wine taster, inox level, top manhole cover (diam 400) single cooling jacket and rectangular or oval side manway door.

CODE FCPST	LITERS	BOTTOM	∅	H WALL	H LEGS	TOP MANHOLE COVER	H TOTAL	SIDE MANWAY DOOR	ADJ. LEGS	OUTLETS	COOLING JACKET
FCPST2000B	2000	ROUND	1320	1500	500	CENT. ∅ 400 (S) - ○ OFF-CENTRED ∅ 400 (O)	2300	420X320 (S) - 420X530 (O) - OVAL (O)	OPTIONAL	DIN50F (S) - FL 100X100 (O) - Triclamp (O)	H 500
FCPST2500	2500	ROUND	1320	2000	500	CENT. ∅ 400 (S) - ○ OFF-CENTRED ∅ 400 (O)	2800	420X320 (S) - 420X530 (O) - OVAL (O)	OPTIONAL	DIN50F (S) - FL 100X100 (O) - Triclamp (O)	H 500
FCPST3000	3000	ROUND	1320	2250	500	CENT. ∅ 400 (S) - ○ OFF-CENTRED ∅ 400 (O)	3050	420X320 (S) - 420X530 (O) - OVAL (O)	OPTIONAL	DIN50F (S) - FL 100X100 (O) - Triclamp (O)	H 500
FCPST3000B	3000	ROUND	1600	1500	500	CENT. ∅ 400 (S) - ○ OFF-CENTRED ∅ 400 (O)	2300	420X530 (S) - 420X320 (O) - OVAL (O)	OPTIONAL	DIN50F (S) - FL 100X100 (O) - Triclamp (O)	H 500
FCPST4000	4000	ROUND	1600	2000	500	CENT. ∅ 400 (S) - ○ OFF-CENTRED ∅ 400 (O)	2800	420X530 (S) - 420X320 (O) - OVAL (O)	OPTIONAL	DIN50F (S) - FL 100X100 (O) - Triclamp (O)	H 500
FCPST5000	5000	ROUND	1600	2500	500	CENT. ∅ 400 (S) - ○ OFF-CENTRED ∅ 400 (O)	3300	420X530 (S) - 420X320 (O) - OVAL (O)	OPTIONAL	DIN50F (S) - FL 100X100 (O) - Triclamp (O)	H 500
FCPST5000B	5000	ROUND	1750	2000	500	CENT. ∅ 400 (S) - ○ OFF-CENTRED ∅ 400 (O)	2800	420X530 (S) - 420X320 (O) - OVAL (O)	OPTIONAL	DIN50F (S) - FL 100X100 (O) - Triclamp (O)	H 500
FCPST6000	6000	ROUND	1600	3000	500	CENT. ∅ 400 (S) - ○ OFF-CENTRED ∅ 400 (O)	3800	420X530 (S) - 420X320 (O) - OVAL (O)	OPTIONAL	DIN50F (S) - FL 100X100 (O) - Triclamp (O)	H 500
FCPST6000B	6000	ROUND	1750	2500	500	CENT. ∅ 400 (S) - ○ OFF-CENTRED ∅ 400 (O)	3300	420X530 (S) - 420X320 (O) - OVAL (O)	OPTIONAL	DIN50F (S) - FL 100X100 (O) - Triclamp (O)	H 500
FCPST7500	7500	ROUND	1750	3000	500	CENT. ∅ 400 (S) - ○ OFF-CENTRED ∅ 400 (O)	3800	420X530 (S) - 420X320 (O) - OVAL (O)	OPTIONAL	DIN50F (S) - FL 100X100 (O) - Triclamp (O)	H 750
FCPST7500B	7500	ROUND	1900	2500	500	CENT. ∅ 400 (S) - ○ OFF-CENTRED ∅ 400 (O)	3300	420X530 (S) - 420X320 (O) - OVAL (O)	OPTIONAL	DIN50F (S) - FL 100X100 (O) - Triclamp (O)	H 750
FCPST10000	10000	ROUND	1900	3500	500	CENT. ∅ 400 (S) - ○ OFF-CENTRED ∅ 400 (O)	4300	420X530 (S) - 420X320 (O) - OVAL (O)	OPTIONAL	DIN50F (S) - FL 100X100 (O) - Triclamp (O)	H 750
FCPST10000B	10000	ROUND	2100	3000	500	CENT. ∅ 400 (S) - ○ OFF-CENTRED ∅ 400 (O)	3800	420X530 (S) - 420X320 (O) - OVAL (O)	OPTIONAL	DIN50F (S) - FL 100X100 (O) - Triclamp (O)	H 750
FCPST12000	12000	ROUND	2100	3250	500	CENT. ∅ 400 (S) - ○ OFF-CENTRED ∅ 400 (O)	4050	420X530 (S) - 420X320 (O) - OVAL (O)	OPTIONAL	DIN50F (S) - FL 100X100 (O) - Triclamp (O)	H 750
FCPST14000	14000	ROUND	2100	4000	500	CENT. ∅ 400 (S) - ○ OFF-CENTRED ∅ 400 (O)	4800	420X530 (S) - 420X320 (O) - OVAL (O)	OPTIONAL	DIN50F (S) - FL 100X100 (O) - Triclamp (O)	H 750 + H 750
FCPST16000	16000	ROUND	2100	4500	500	CENT. ∅ 400 (S) - ○ OFF-CENTRED ∅ 400 (O)	5300	420X530 (S) - 420X320 (O) - OVAL (O)	OPTIONAL	DIN50F (S) - FL 100X100 (O) - Triclamp (O)	H 750 + H 750

Simbology: (S) Standard - (O) Optional



Algor
eno-tecnologie inox



TANK STORAGE SYSTEM WITH ROUND BOTTOM AND SHAPED COOLING JACKET

Tank storage system with round bottom, welded legs, wine taster, inox level, top manhole cover (diam 400) shaped cooling jacket and rectangular or oval side manway door.

CODE FCPST	LITERS	BOTTOM	∅	H WALL	H LEGS	TOP MANHOLE COVER	H TOTAL	SIDE MANWAY DOOR	ADJ. LEGS	OUTLETS	COOLING JACKET
FCPSTF2000B	2000	ROUND	1320	1500	500	CENT. ∅ 400 (S) - OFF-CENTRED ∅ 400 (O)	2300	420X320 (S) - 420X530 (O) - OVAL (O)	OPTIONAL	DIN50F (S) - FL 100X100 (O) - Triclamp (O)	H 1000 SHAPED
FCPSTF2500	2500	ROUND	1320	2000	500	CENT. ∅ 400 (S) - OFF-CENTRED ∅ 400 (O)	2800	420X320 (S) - 420X530 (O) - OVAL (O)	OPTIONAL	DIN50F (S) - FL 100X100 (O) - Triclamp (O)	H 1000 SHAPED
FCPSTF3000	3000	ROUND	1320	2250	500	CENT. ∅ 400 (S) - OFF-CENTRED ∅ 400 (O)	3050	420X320 (S) - 420X530 (O) - OVAL (O)	OPTIONAL	DIN50F (S) - FL 100X100 (O) - Triclamp (O)	H 1000 SHAPED
FCPSTF3000B	3000	ROUND	1600	1500	500	CENT. ∅ 400 (S) - OFF-CENTRED ∅ 400 (O)	2300	420X530 (S) - 420X320 (O) - OVAL (O)	OPTIONAL	DIN50F (S) - FL 100X100 (O) - Triclamp (O)	H 1000 SHAPED
FCPSTF4000	4000	ROUND	1600	2000	500	CENT. ∅ 400 (S) - OFF-CENTRED ∅ 400 (O)	2800	420X530 (S) - 420X320 (O) - OVAL (O)	OPTIONAL	DIN50F (S) - FL 100X100 (O) - Triclamp (O)	H 1000 SHAPED
FCPSTF5000	5000	ROUND	1600	2500	500	CENT. ∅ 400 (S) - OFF-CENTRED ∅ 400 (O)	3300	420X530 (S) - 420X320 (O) - OVAL (O)	OPTIONAL	DIN50F (S) - FL 100X100 (O) - Triclamp (O)	H 1000 SHAPED
FCPSTF5000B	5000	ROUND	1750	2000	500	CENT. ∅ 400 (S) - OFF-CENTRED ∅ 400 (O)	2800	420X530 (S) - 420X320 (O) - OVAL (O)	OPTIONAL	DIN50F (S) - FL 100X100 (O) - Triclamp (O)	H 1000 SHAPED
FCPSTF6000	6000	ROUND	1600	3000	500	CENT. ∅ 400 (S) - OFF-CENTRED ∅ 400 (O)	3800	420X530 (S) - 420X320 (O) - OVAL (O)	OPTIONAL	DIN50F (S) - FL 100X100 (O) - Triclamp (O)	H 1000 SHAPED
FCPSTF6000B	6000	ROUND	1750	2500	500	CENT. ∅ 400 (S) - OFF-CENTRED ∅ 400 (O)	3300	420X530 (S) - 420X320 (O) - OVAL (O)	OPTIONAL	DIN50F (S) - FL 100X100 (O) - Triclamp (O)	H 1000 SHAPED
FCPSTF7500	7500	ROUND	1750	3000	500	CENT. ∅ 400 (S) - OFF-CENTRED ∅ 400 (O)	3800	420X530 (S) - 420X320 (O) - OVAL (O)	OPTIONAL	DIN50F (S) - FL 100X100 (O) - Triclamp (O)	H 1000 SHAPED
FCPSTF7500B	7500	ROUND	1900	2500	500	CENT. ∅ 400 (S) - OFF-CENTRED ∅ 400 (O)	3300	420X530 (S) - 420X320 (O) - OVAL (O)	OPTIONAL	DIN50F (S) - FL 100X100 (O) - Triclamp (O)	H 1000 SHAPED
FCPSTF10000	10000	ROUND	1900	3500	500	CENT. ∅ 400 (S) - OFF-CENTRED ∅ 400 (O)	4300	420X530 (S) - 420X320 (O) - OVAL (O)	OPTIONAL	DIN50F (S) - FL 100X100 (O) - Triclamp (O)	H 1000 SHAPED
FCPSTF10000B	10000	ROUND	2100	3000	500	CENT. ∅ 400 (S) - OFF-CENTRED ∅ 400 (O)	3800	420X530 (S) - 420X320 (O) - OVAL (O)	OPTIONAL	DIN50F (S) - FL 100X100 (O) - Triclamp (O)	H 1000 SHAPED
FCPSTF12000	12000	ROUND	2100	3250	500	CENT. ∅ 400 (S) - OFF-CENTRED ∅ 400 (O)	4050	420X530 (S) - 420X320 (O) - OVAL (O)	OPTIONAL	DIN50F (S) - FL 100X100 (O) - Triclamp (O)	H 1000 SHAPED
FCPSTF14000	14000	ROUND	2100	4000	500	CENT. ∅ 400 (S) - OFF-CENTRED ∅ 400 (O)	4800	420X530 (S) - 420X320 (O) - OVAL (O)	OPTIONAL	DIN50F (S) - FL 100X100 (O) - Triclamp (O)	H 1000 +750
FCPSTF16000	16000	ROUND	2100	4500	500	CENT. ∅ 400 (S) - OFF-CENTRED ∅ 400 (O)	5300	420X530 (S) - 420X320 (O) - OVAL (O)	OPTIONAL	DIN50F (S) - FL 100X100 (O) - Triclamp (O)	H 1000.+750

Simbology: (S) Standard - (O) Optional



Algor
eno-technologie inox



TANK STORAGE SYSTEM WITH 5% SLOPED BOTTOM

Tank storage system with 5% sloped bottom, welded legs, wine taster, inox level, top manhole cover (diam 400), and rectangular or oval side manway door.

CODE FCPSI	LITERS	BOTTOM	Ø	H WALL	H LEGS	TOP MANHOLE COVER	H TOTAL	SIDE MANWAY DOOR	ADJ. LEGS	OUTLETS
FCPSI2000B	2000	SLOPED 5%	1320	1500	500	CENT. Ø 400 (S) - ○ OFF-CENTRED Ø 400 (O)	2300	420X320 (S) - 420X530 (O) - OVAL (O)	OPTIONAL	DIN50F (S) - FL 100X100 (O) - Triclamp (O)
FCPSI2500	2500	SLOPED 5%	1320	2000	500	CENT. Ø 400 (S) - ○ OFF-CENTRED Ø 400 (O)	2800	420X320 (S) - 420X530 (O) - OVAL (O)	OPTIONAL	DIN50F (S) - FL 100X100 (O) - Triclamp (O)
FCPSI3000	3000	SLOPED 5%	1320	2250	500	CENT. Ø 400 (S) - ○ OFF-CENTRED Ø 400 (O)	3050	420X320 (S) - 420X530 (O) - OVAL (O)	OPTIONAL	DIN50F (S) - FL 100X100 (O) - Triclamp (O)
FCPSI3000B	3000	SLOPED 5%	1600	1500	500	CENT. Ø 400 (S) - ○ OFF-CENTRED Ø 400 (O)	2300	420X530 (S) - 420X320 (O) - OVAL (O)	OPTIONAL	DIN50F (S) - FL 100X100 (O) - Triclamp (O)
FCPSI4000	4000	SLOPED 5%	1600	2000	500	CENT. Ø 400 (S) - ○ OFF-CENTRED Ø 400 (O)	2800	420X530 (S) - 420X320 (O) - OVAL (O)	OPTIONAL	DIN50F (S) - FL 100X100 (O) - Triclamp (O)
FCPSI5000	5000	SLOPED 5%	1600	2500	500	CENT. Ø 400 (S) - ○ OFF-CENTRED Ø 400 (O)	3300	420X530 (S) - 420X320 (O) - OVAL (O)	OPTIONAL	DIN50F (S) - FL 100X100 (O) - Triclamp (O)
FCPSI5000B	5000	SLOPED 5%	1750	2000	500	CENT. Ø 400 (S) - ○ OFF-CENTRED Ø 400 (O)	2800	420X530 (S) - 420X320 (O) - OVAL (O)	OPTIONAL	DIN50F (S) - FL 100X100 (O) - Triclamp (O)
FCPSI6000	6000	SLOPED 5%	1600	3000	500	CENT. Ø 400 (S) - ○ OFF-CENTRED Ø 400 (O)	3800	420X530 (S) - 420X320 (O) - OVAL (O)	OPTIONAL	DIN50F (S) - FL 100X100 (O) - Triclamp (O)
FCPSI6000B	6000	SLOPED 5%	1750	2500	500	CENT. Ø 400 (S) - ○ OFF-CENTRED Ø 400 (O)	3300	420X530 (S) - 420X320 (O) - OVAL (O)	OPTIONAL	DIN50F (S) - FL 100X100 (O) - Triclamp (O)
FCPSI7500	7500	SLOPED 5%	1750	3000	500	CENT. Ø 400 (S) - ○ OFF-CENTRED Ø 400 (O)	3800	420X530 (S) - 420X320 (O) - OVAL (O)	OPTIONAL	DIN50F (S) - FL 100X100 (O) - Triclamp (O)
FCPSI7500B	7500	SLOPED 5%	1900	2500	500	CENT. Ø 400 (S) - ○ OFF-CENTRED Ø 400 (O)	3300	420X530 (S) - 420X320 (O) - OVAL (O)	OPTIONAL	DIN50F (S) - FL 100X100 (O) - Triclamp (O)
FCPSI10000	10000	SLOPED 5%	1900	3500	500	CENT. Ø 400 (S) - ○ OFF-CENTRED Ø 400 (O)	4300	420X530 (S) - 420X320 (O) - OVAL (O)	OPTIONAL	DIN50F (S) - FL 100X100 (O) - Triclamp (O)
FCPSI10000B	10000	SLOPED 5%	2100	3000	500	CENT. Ø 400 (S) - ○ OFF-CENTRED Ø 400 (O)	3800	420X530 (S) - 420X320 (O) - OVAL (O)	OPTIONAL	DIN50F (S) - FL 100X100 (O) - Triclamp (O)
FCPSI12000	12000	SLOPED 5%	2100	3250	500	CENT. Ø 400 (S) - ○ OFF-CENTRED Ø 400 (O)	4050	420X530 (S) - 420X320 (O) - OVAL (O)	OPTIONAL	DIN50F (S) - FL 100X100 (O) - Triclamp (O)
FCPSI14000	14000	SLOPED 5%	2100	4000	500	CENT. Ø 400 (S) - ○ OFF-CENTRED Ø 400 (O)	4800	420X530 (S) - 420X320 (O) - OVAL (O)	OPTIONAL	DIN50F (S) - FL 100X100 (O) - Triclamp (O)
FCPSI16000	16000	SLOPED 5%	2100	4500	500	CENT. Ø 400 (S) - ○ OFF-CENTRED Ø 400 (O)	5300	420X530 (S) - 420X320 (O) - OVAL (O)	OPTIONAL	DIN50F (S) - FL 100X100 (O) - Triclamp (O)

Simbology: (S) Standard - (O) Optional



Algor
eno-tecnologie inox



TANK STORAGE SYSTEM WITH 5% SLOPED BOTTOM AND SINGLE COOLING JACKET

Tank storage system with 5% sloped bottom, welded legs, wine taster, inox level, top manhole cover (diam 400), single cooling jacket and rectangular or oval side manway door.

CODE FCPSTI	LITERS	BOTTOM	∅	H WALL	H LEGS	TOP MANHOLE COVER	H TOTAL	SIDE MANWAY DOOR	ADJ. LEGS	OUTLETS	COOLING JACKET
FCPSTI2000B	2000	SLOPED 5%	1320	1500	500	CENT. ∅ 400 (S) - ○ OFF-CENTRED ∅ 400 (O)	2300	420X320 (S) - 420X530 (O) - OVAL (O)	OPTIONAL	DIN50F (S) - FL 100X100 (O) - Triclamp (O)	H 500
FCPSTI2500	2500	SLOPED 5%	1320	2000	500	CENT. ∅ 400 (S) - ○ OFF-CENTRED ∅ 400 (O)	2800	420X320 (S) - 420X530 (O) - OVAL (O)	OPTIONAL	DIN50F (S) - FL 100X100 (O) - Triclamp (O)	H 500
FCPSTI3000	3000	SLOPED 5%	1320	2250	500	CENT. ∅ 400 (S) - ○ OFF-CENTRED ∅ 400 (O)	3050	420X320 (S) - 420X530 (O) - OVAL (O)	OPTIONAL	DIN50F (S) - FL 100X100 (O) - Triclamp (O)	H 500
FCPSTI3000B	3000	SLOPED 5%	1600	1500	500	CENT. ∅ 400 (S) - ○ OFF-CENTRED ∅ 400 (O)	2300	420X530 (S) - 420X320 (O) - OVAL (O)	OPTIONAL	DIN50F (S) - FL 100X100 (O) - Triclamp (O)	H 500
FCPSTI4000	4000	SLOPED 5%	1600	2000	500	CENT. ∅ 400 (S) - ○ OFF-CENTRED ∅ 400 (O)	2800	420X530 (S) - 420X320 (O) - OVAL (O)	OPTIONAL	DIN50F (S) - FL 100X100 (O) - Triclamp (O)	H 500
FCPSTI5000	5000	SLOPED 5%	1600	2500	500	CENT. ∅ 400 (S) - ○ OFF-CENTRED ∅ 400 (O)	3300	420X530 (S) - 420X320 (O) - OVAL (O)	OPTIONAL	DIN50F (S) - FL 100X100 (O) - Triclamp (O)	H 500
FCPSTI5000B	5000	SLOPED 5%	1750	2000	500	CENT. ∅ 400 (S) - ○ OFF-CENTRED ∅ 400 (O)	2800	420X530 (S) - 420X320 (O) - OVAL (O)	OPTIONAL	DIN50F (S) - FL 100X100 (O) - Triclamp (O)	H 500
FCPSTI6000	6000	SLOPED 5%	1600	3000	500	CENT. ∅ 400 (S) - ○ OFF-CENTRED ∅ 400 (O)	3800	420X530 (S) - 420X320 (O) - OVAL (O)	OPTIONAL	DIN50F (S) - FL 100X100 (O) - Triclamp (O)	H 500
FCPSTI6000B	6000	SLOPED 5%	1750	2500	500	CENT. ∅ 400 (S) - ○ OFF-CENTRED ∅ 400 (O)	3300	420X530 (S) - 420X320 (O) - OVAL (O)	OPTIONAL	DIN50F (S) - FL 100X100 (O) - Triclamp (O)	H 500
FCPSTI7500	7500	SLOPED 5%	1750	3000	500	CENT. ∅ 400 (S) - ○ OFF-CENTRED ∅ 400 (O)	3800	420X530 (S) - 420X320 (O) - OVAL (O)	OPTIONAL	DIN50F (S) - FL 100X100 (O) - Triclamp (O)	H 750
FCPSTI7500B	7500	SLOPED 5%	1900	2500	500	CENT. ∅ 400 (S) - ○ OFF-CENTRED ∅ 400 (O)	3300	420X530 (S) - 420X320 (O) - OVAL (O)	OPTIONAL	DIN50F (S) - FL 100X100 (O) - Triclamp (O)	H 750
FCPSTI10000	10000	SLOPED 5%	1900	3500	500	CENT. ∅ 400 (S) - ○ OFF-CENTRED ∅ 400 (O)	4300	420X530 (S) - 420X320 (O) - OVAL (O)	OPTIONAL	DIN50F (S) - FL 100X100 (O) - Triclamp (O)	H 750
FCPSTI10000B	10000	SLOPED 5%	2100	3000	500	CENT. ∅ 400 (S) - ○ OFF-CENTRED ∅ 400 (O)	3800	420X530 (S) - 420X320 (O) - OVAL (O)	OPTIONAL	DIN50F (S) - FL 100X100 (O) - Triclamp (O)	H 750
FCPSTI12000	12000	SLOPED 5%	2100	3250	500	CENT. ∅ 400 (S) - ○ OFF-CENTRED ∅ 400 (O)	4050	420X530 (S) - 420X320 (O) - OVAL (O)	OPTIONAL	DIN50F (S) - FL 100X100 (O) - Triclamp (O)	H 750
FCPSTI14000	14000	SLOPED 5%	2100	4000	500	CENT. ∅ 400 (S) - ○ OFF-CENTRED ∅ 400 (O)	4800	420X530 (S) - 420X320 (O) - OVAL (O)	OPTIONAL	DIN50F (S) - FL 100X100 (O) - Triclamp (O)	H 750 + H 750
FCPSTI16000	16000	SLOPED 5%	2100	4500	500	CENT. ∅ 400 (S) - ○ OFF-CENTRED ∅ 400 (O)	5300	420X530 (S) - 420X320 (O) - OVAL (O)	OPTIONAL	DIN50F (S) - FL 100X100 (O) - Triclamp (O)	H 750 + H 750

Simbology: (S) Standard - (O) Optional



Algor
eno-tecnologie inox



TANK STORAGE SYSTEM WITH 5% SLOPED BOTTOM AND SHAPED COOLING JACKET

Tank storage system with 5% sloped bottom, welded legs, wine taster, inox level, top manhole cover (diam 400), shaped cooling jacket and rectangular or oval side manway door.

CODE FCPSTFI	LITERS	BOTTOM	∅	H WALL	H LEGS	TOP MANHOLE COVER	H TOTAL	SIDE MANWAY DOOR	ADJ. LEGS	OUTLETS	COOLING JACKET
FCPSTFI2000B	2000	SLOPED 5%	1320	1500	500	CENT. Ø 400 (S) - ○ OFF-CENTRED Ø 400 (O)	2300	420X320 (S) - 420X530 (O) - OVAL (O)	OPTIONAL	DIN50F (S) - FL 100X100 (O) - Triclamp (O)	H 1000 SHAPED
FCPSTFI2500	2500	SLOPED 5%	1320	2000	500	CENT. Ø 400 (S) - ○ OFF-CENTRED Ø 400 (O)	2800	420X320 (S) - 420X530 (O) - OVAL (O)	OPTIONAL	DIN50F (S) - FL 100X100 (O) - Triclamp (O)	H 1000 SHAPED
FCPSTFI3000	3000	SLOPED 5%	1320	2250	500	CENT. Ø 400 (S) - ○ OFF-CENTRED Ø 400 (O)	3050	420X320 (S) - 420X530 (O) - OVAL (O)	OPTIONAL	DIN50F (S) - FL 100X100 (O) - Triclamp (O)	H 1000 SHAPED
FCPSTFI3000B	3000	SLOPED 5%	1600	1500	500	CENT. Ø 400 (S) - ○ OFF-CENTRED Ø 400 (O)	2300	420X530 (S) - 420X320 (O) - OVAL (O)	OPTIONAL	DIN50F (S) - FL 100X100 (O) - Triclamp (O)	H 1000 SHAPED
FCPSTFI4000	4000	SLOPED 5%	1600	2000	500	CENT. Ø 400 (S) - ○ OFF-CENTRED Ø 400 (O)	2800	420X530 (S) - 420X320 (O) - OVAL (O)	OPTIONAL	DIN50F (S) - FL 100X100 (O) - Triclamp (O)	H 1000 SHAPED
FCPSTFI5000	5000	SLOPED 5%	1600	2500	500	CENT. Ø 400 (S) - ○ OFF-CENTRED Ø 400 (O)	3300	420X530 (S) - 420X320 (O) - OVAL (O)	OPTIONAL	DIN50F (S) - FL 100X100 (O) - Triclamp (O)	H 1000 SHAPED
FCPSTFI5000B	5000	SLOPED 5%	1750	2000	500	CENT. Ø 400 (S) - ○ OFF-CENTRED Ø 400 (O)	2800	420X530 (S) - 420X320 (O) - OVAL (O)	OPTIONAL	DIN50F (S) - FL 100X100 (O) - Triclamp (O)	H 1000 SHAPED
FCPSTFI6000	6000	SLOPED 5%	1600	3000	500	CENT. Ø 400 (S) - ○ OFF-CENTRED Ø 400 (O)	3800	420X530 (S) - 420X320 (O) - OVAL (O)	OPTIONAL	DIN50F (S) - FL 100X100 (O) - Triclamp (O)	H 1000 SHAPED
FCPSTFI6000B	6000	SLOPED 5%	1750	2500	500	CENT. Ø 400 (S) - ○ OFF-CENTRED Ø 400 (O)	3300	420X530 (S) - 420X320 (O) - OVAL (O)	OPTIONAL	DIN50F (S) - FL 100X100 (O) - Triclamp (O)	H 1000 SHAPED
FCPSTFI7500	7500	SLOPED 5%	1750	3000	500	CENT. Ø 400 (S) - ○ OFF-CENTRED Ø 400 (O)	3800	420X530 (S) - 420X320 (O) - OVAL (O)	OPTIONAL	DIN50F (S) - FL 100X100 (O) - Triclamp (O)	H 1000 SHAPED
FCPSTFI7500B	7500	SLOPED 5%	1900	2500	500	CENT. Ø 400 (S) - ○ OFF-CENTRED Ø 400 (O)	3300	420X530 (S) - 420X320 (O) - OVAL (O)	OPTIONAL	DIN50F (S) - FL 100X100 (O) - Triclamp (O)	H 1000 SHAPED
FCPSTFI10000	10000	SLOPED 5%	1900	3500	500	CENT. Ø 400 (S) - ○ OFF-CENTRED Ø 400 (O)	4300	420X530 (S) - 420X320 (O) - OVAL (O)	OPTIONAL	DIN50F (S) - FL 100X100 (O) - Triclamp (O)	H 1000 SHAPED
FCPSTFI10000B	10000	SLOPED 5%	2100	3000	500	CENT. Ø 400 (S) - ○ OFF-CENTRED Ø 400 (O)	3800	420X530 (S) - 420X320 (O) - OVAL (O)	OPTIONAL	DIN50F (S) - FL 100X100 (O) - Triclamp (O)	H 1000 SHAPED
FCPSTFI12000	12000	SLOPED 5%	2100	3250	500	CENT. Ø 400 (S) - ○ OFF-CENTRED Ø 400 (O)	4050	420X530 (S) - 420X320 (O) - OVAL (O)	OPTIONAL	DIN50F (S) - FL 100X100 (O) - Triclamp (O)	H 1000 SHAPED
FCPSTFI14000	14000	SLOPED 5%	2100	4000	500	CENT. Ø 400 (S) - ○ OFF-CENTRED Ø 400 (O)	4800	420X530 (S) - 420X320 (O) - OVAL (O)	OPTIONAL	DIN50F (S) - FL 100X100 (O) - Triclamp (O)	H 1000 +750
FCPSTFI16000	16000	SLOPED 5%	2100	4500	500	CENT. Ø 400 (S) - ○ OFF-CENTRED Ø 400 (O)	5300	420X530 (S) - 420X320 (O) - OVAL (O)	OPTIONAL	DIN50F (S) - FL 100X100 (O) - Triclamp (O)	H 1000.+750

Simbology: (S) Standard - (O) Optional



VARIABLE CAPACITY FLAT BOTTOM TANKS

Variable capacity tanks with flat bottom, and floating lid kit. Available with inox stand and welded side manway door.

CODE FPP	LITERS	BOTTOM	Ø	H WALL	H LEGS	H TOTAL	SIDE MANWAY DOOR	WINCH	OUTLETS
FPP100	100	FLAT	450	750	NO	750	NO	NO	1/2" GAS
FPP230	230	FLAT	620	750	NO	750	NO	NO	1" (S) - Triclamp (O)
FPP330	330	FLAT	620	1100	NO	1100	NO	NO	1" (S) - Triclamp (O)
FPP420	420	FLAT	750	1000	NO	1000	NO - Ø 300 (O)	NO	1" (S) - Triclamp (O)
FPP530	530	FLAT	750	1250	NO	1250	NO - Ø 300 (O)	NO	1" (S) - Triclamp (O)
FPP640	640	FLAT	750	1500	NO	1500	NO - Ø 300 (O)	NO	1" (S) - Triclamp (O)
FPP800	800	FLAT	940	1250	NO	1250	NO - Ø 300 (O)	NO	1" (S) - Triclamp (O)
FPP1000	1000	FLAT	940	1500	NO	1500	NO - Ø 300 (O)	NO	1" (S) - Triclamp (O)
FPP1000B	1000	FLAT	1020	1250	NO	1250	NO - Ø 300 (O)	NO	1" (S) - Triclamp (O)

Simbology: (S) Standard - (O) Optional



VARIABLE CAPACITY FLAT BOTTOM TANKS WITH SUMP

Variable capacity tanks with flat bottom and sump, welded legs, wine taster, inox level, and floating lid kit. Available with welded side manway door.

CODE FVPP	LITERS	BOTTOM	∅	H WALL	H LEGS	H TOTAL	SIDE MANWAY DOOR	ADJUSTABLE LEGS	WINCH	OUTLETS
FVPP230	230	FLAT WITH SUMP	620	750	450	1200	NO	NO	NO	DIN40F (S) - FL 100X100 (O) - Triclamp (O)
FVPP330	330	FLAT WITH SUMP	620	1100	450	1550	NO	NO	NO	DIN40F (S) - FL 100X100 (O) - Triclamp (O)
FVPP420	420	FLAT WITH SUMP	750	1000	450	1450	NO	NO	NO	DIN40F (S) - FL 100X100 (O) - Triclamp (O)
FVPP530	530	FLAT WITH SUMP	750	1250	450	1700	NO - Ø 300 (O)	NO	NO	DIN40F (S) - FL 100X100 (O) - Triclamp (O)
FVPP640	640	FLAT WITH SUMP	750	1500	450	1950	NO - Ø 300 (O)	NO	NO	DIN40F (S) - FL 100X100 (O) - Triclamp (O)
FVPP800	800	FLAT WITH SUMP	940	1250	450	1700	NO - Ø 300 (O)	NO	NO	DIN40F (S) - FL 100X100 (O) - Triclamp (O)
FVPP1000	1000	FLAT WITH SUMP	940	1500	450	1950	NO - Ø 300 (O) - 420X320 (O)	NO	NO/YES (O)	DIN40F (S) - FL 100X100 (O) - Triclamp (O)
FVPP1250	1250	FLAT WITH SUMP	1020	1500	450	1950	NO - Ø 300 (O) - 420X320 (O)	NO	NO/YES (O)	DIN40F (S) - FL 100X100 (O) - Triclamp (O)
FVPP1500	1500	FLAT WITH SUMP	1020	2000	450	2450	NO - Ø 300 (O) - 420X320 (O)	NO	NO/YES (O)	DIN40F (S) - FL 100X100 (O) - Triclamp (O)

Simbology: (S) Standard - (O) Optional



Algor
eno-tecnologie inox



VARIABLE CAPACITY FLAT BOTTOM TANKS WITH SUMP AND SINGLE COOLING JACKET

Variable capacity tanks with flat bottom, sump, single cooling jacket, welded legs, wine taster, inox level, and floating lid kit. Available with welded side manway door.

CODE FVPPT	LITERS	BOTTOM	Ø	H WALL	H LEGS	H TOTAL	SIDE MANWAY DOOR	ADJUSTABLE LEGS	WINCH	OUTLETS	COOLING JACKET
FVPPT640	640	FLAT WITH SUMP	750	1500	450	1950	NO - Ø 300 (O)	NO	NO	DIN40F (S) - FL 100X100 (O) - Triclamp (O)	H 500
FVPPT800	800	FLAT WITH SUMP	940	1250	450	1700	NO - Ø 300 (O)	NO	NO	DIN40F (S) - FL 100X100 (O) - Triclamp (O)	H 500
FVPPT1000	1000	FLAT WITH SUMP	940	1500	450	1950	NO - Ø 300 (O) - 420X320 (O)	NO	NO/YES (O)	DIN40F (S) - FL 100X100 (O) - Triclamp (O)	H 500
FVPPT1250	1250	FLAT WITH SUMP	1020	1500	450	1950	NO - Ø 300 (O) - 420X320 (O)	NO	NO/YES (O)	DIN40F (S) - FL 100X100 (O) - Triclamp (O)	H 500
FVPPT1500	1500	FLAT WITH SUMP	1020	2000	450	2450	NO - Ø 300 (O) - 420X320 (O)	NO	NO/YES (O)	DIN40F (S) - FL 100X100 (O) - Triclamp (O)	H 500

Simbology: (S) Standard - (O) Optional



TANK STORAGE SYSTEM WITH FLAT BOTTOM AND SUMP

Tank storage system with flat bottom and sump, welded legs, wine taster, inox level, and top manhole cover (diam 400). Available with welded side manway door.

CODE FVSP	LITERS	BOTTOM	Ø	H WALL	H LEGS	H TOTAL	SIDE MANWAY DOOR	ADJUSTABLE LEGS	TOP MANHOLE COVER	OUTLETS
FVSP230	230	FLAT WITH SUMP	620	750	450	1350	NO	NO	Ø 400	DIN40F (S) - FL 100X100 (O) - Triclamp (O)
FVSP350	350	FLAT WITH SUMP	620	1100	450	1700	NO	NO	Ø 400	DIN40F (S) - FL 100X100 (O) - Triclamp (O)
FVSP570	570	FLAT WITH SUMP	750	1250	450	1850	NO - Ø 300 (O)	NO	Ø 400	DIN40F (S) - FL 100X100 (O) - Triclamp (O)
FVSP900	900	FLAT WITH SUMP	940	1300	450	1900	NO - Ø 300 (O)	NO	Ø 400	DIN40F (S) - FL 100X100 (O) - Triclamp (O)
FVSP1000	1000	FLAT WITH SUMP	940	1500	450	2100	NO - Ø 300 (O)	NO	Ø 400	DIN40F (S) - FL 100X100 (O) - Triclamp (O)

Simbology: (S) Standard - (O) Optional



Algor
eno-tecnologie inox



TANK STORAGE SYSTEM WITH FLAT BOTTOM, WELDED LEGS AND SINGLE COOLING JACKET

Tank storage system with flat bottom, welded stands, wine taster, inox level, lid on top diameter 400, single cooling jacket, partial and total exhaust valves. Available with welded door.

CODE FVSPT	LITERS	BOTTOM	Ø	H WALL	H LEGS	H TOTAL	SIDE MANWAY DOOR	ADJUSTABLE LEGS	TOP MANHOLE COVER	OUTLETS	COOLING JACKET
FVSPT640	640	FLAT WITH SUMP	750	1500	450	2100	NO - Ø 300 (O)	NO	Ø 400	DIN40F (S) - FL 100X100 (O) - Triclamp (O)	H 500
FVSPT800	800	FLAT WITH SUMP	940	1250	450	1850	NO - Ø 300 (O)	NO	Ø 400	DIN40F (S) - FL 100X100 (O) - Triclamp (O)	H 500
FVSPT1000	1000	FLAT WITH SUMP	940	1500	450	2100	NO - Ø 300 (O) - 420X320 (O)	NO	Ø 400	DIN40F (S) - FL 100X100 (O) - Triclamp (O)	H 500
FVSPT1250	1250	FLAT WITH SUMP	1020	1500	450	2100	NO - Ø 300 (O) - 420X320 (O)	NO	Ø 400	DIN40F (S) - FL 100X100 (O) - Triclamp (O)	H 500
FVSPT1500	1500	FLAT WITH SUMP	1020	2000	450	2600	NO - Ø 300 (O) - 420X320 (O)	NO	Ø 400	DIN40F (S) - FL 100X100 (O) - Triclamp (O)	H 500

Simbology: (S) Standard - (O) Optional



TANK STORAGE SYSTEM WITH FLAT BOTTOM AND WELDED LEGS

Tank storage system with flat bottom, welded legs, wine taster, inox level, lid on top diameter 400, partial and total exhaust valves. Available with welded door.

CODE BARRIQUE	LITERS	BOTTOM	∅	H WALL	H LEGS	H TOTAL	SIDE MANWAY DOOR	ADJUSTABLE LEGS	TOP MANHOLE COVER	OUTLETS
BARRIQUE228	228	FLAT WITH SUMP	620	760	450	1360	NO	NO	∅ 400	DIN40F (S) - FL 100X100 (O) - Triclamp (O)
BARRIQUE456	456	FLAT WITH SUMP	750	1040	450	1640	NO	NO	∅ 400	DIN40F (S) - FL 100X100 (O) - Triclamp (O)
BARRIQUE684	684	FLAT WITH SUMP	940	1000	450	1600	NO	NO	∅ 400	DIN40F (S) - FL 100X100 (O) - Triclamp (O)
BARRIQUE912	912	FLAT WITH SUMP	940	1310	450	1910	NO - ∅ 300 (O)	NO	∅ 400	DIN40F (S) - FL 100X100 (O) - Triclamp (O)
BARRIQUE1140	1140	FLAT WITH SUMP	1020	1390	450	1990	NO - ∅ 300 (O) - 420X320 (O)	NO	∅ 400	DIN40F (S) - FL 100X100 (O) - Triclamp (O)
BARRIQUE1368	1368	FLAT WITH SUMP	1020	1660	450	2260	NO - ∅ 300 (O) - 420X320 (O)	NO	∅ 400	DIN40F (S) - FL 100X100 (O) - Triclamp (O)
BARRIQUE1596	1596	FLAT WITH SUMP	1020	1950	450	2550	NO - ∅ 300 (O) - 420X320 (O)	NO	∅ 400	DIN40F (S) - FL 100X100 (O) - Triclamp (O)

Simbology: (S) Standard - (O) Optional

NOTES

NOTES

Algor srl

Via Maestri del Lavoro, 62 35010 Villa del Conte (PD) Italia

Tel. +39 049 9325738 - Fax. + 39 049 9325604

www.algorgroup.com - e-mail: info@algorgroup.com